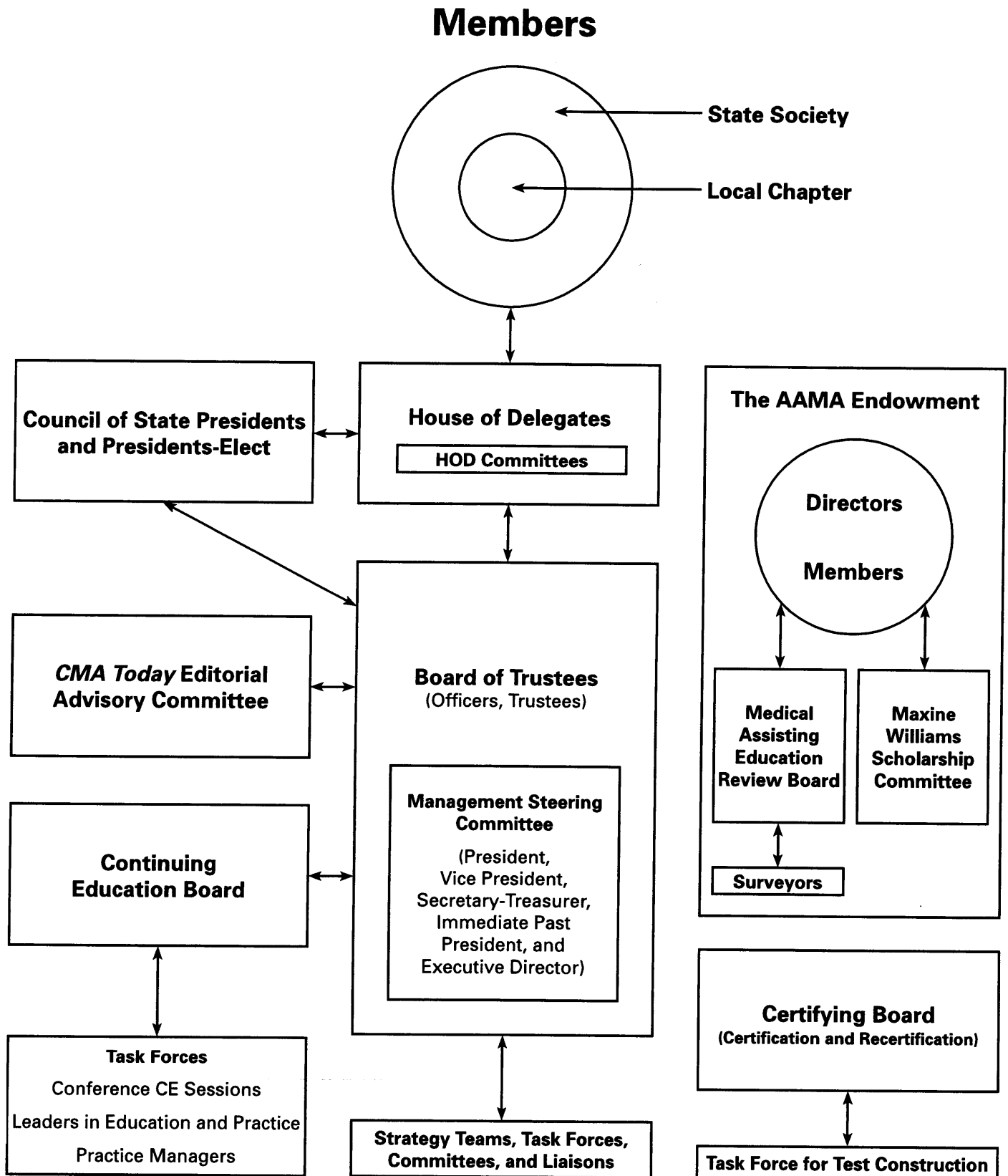


AAMA Organizational Chart



American Association of Medical Assistants Organizational Structure

Established in 1955, the American Association of Medical Assistants (AAMA) continues to be the premier organization dedicated to serving the interests of medical assistants. In fact, it is the only association in the world devoted exclusively to the medical assisting profession.

AAMA members include practicing medical assistants (administrative, clinical, and office managers), medical assisting educators, students, and others interested in the profession. In addition, scores of physicians serve the AAMA at the chapter, state, and national levels.

The AAMA is a trilevel organization comprising national, state, and local levels. The national association maintains the Executive Office in Chicago. State societies are chartered by and affiliated with the national association. Local chapters are chartered by and directly affiliated with their state society. Members are required to belong to all three levels unless there is no local chapter or state society available.

The governing body of the American Association of Medical Assistants is the House of Delegates (HOD). The HOD convenes each year at the AAMA Annual Conference and comprises members of the Board of Trustees (BOT), AAMA past presidents, and delegates from each of the constituent state societies. It is the responsibility of the HOD to determine the policies of the AAMA, amend its Bylaws, conduct the election of officers and trustees, and act upon any proposals brought forth.

Resolutions to be submitted to the House of Delegates are reviewed by the Board of Trustees. The BOT is composed of the following:

- President
- Vice President
- Secretary-Treasurer
- Speaker of the House
- Vice Speaker of the House
- Immediate Past President
- Seven Trustees

The BOT is responsible for overseeing the financial affairs of the association, conducting the business of the AAMA between annual meetings of the House and appointing members to boards, strategy teams, task forces, and committees. Their work is guided by the AAMA Strategic Issues Plan, the blueprint of the future of the association.

There are two educational boards: the Certifying Board (CB) and the Continuing Education Board (CEB). It is the responsibility of the CB to prepare, administer, and evaluate examinations for certification and recertification and certify/recertify successful candidates. The CEB administers the continuing education program, which includes continuing education articles, conference educational sessions, and self-study products.

The AAMA Occupational Analysis is the cornerstone of the work performed by the education boards. The Occupational Analysis is the basis for the medical assisting curriculum, content of the CMA (AAMA) Certification/Recertification Examination, and topics approved for continuing education. For a copy of the Occupational Analysis or the AAMA Strategic Issues Plan, visit the [AAMA website](#).